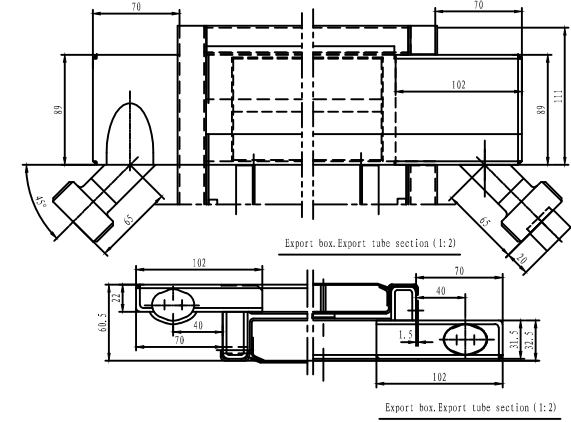
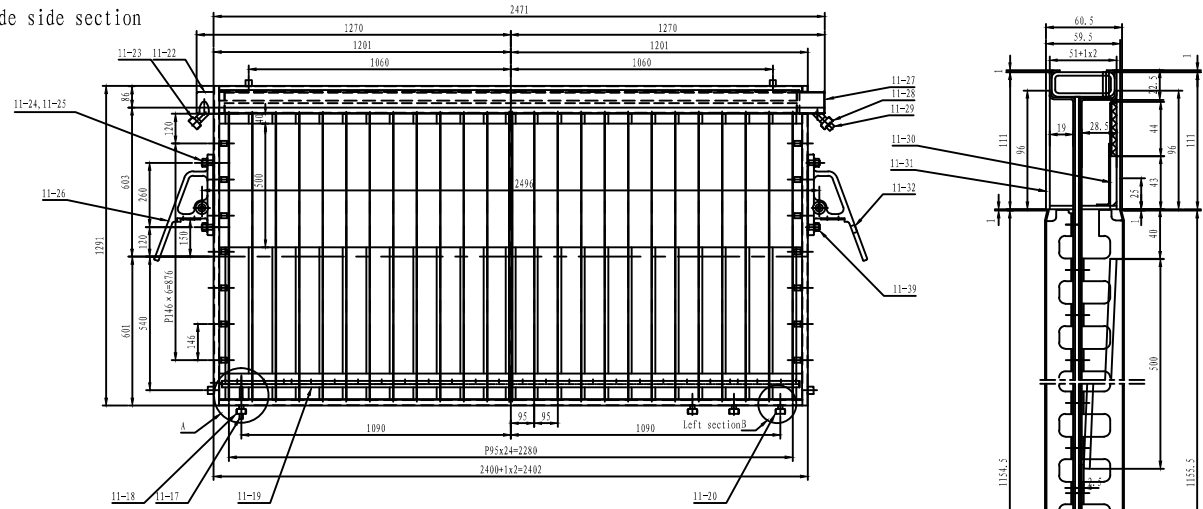
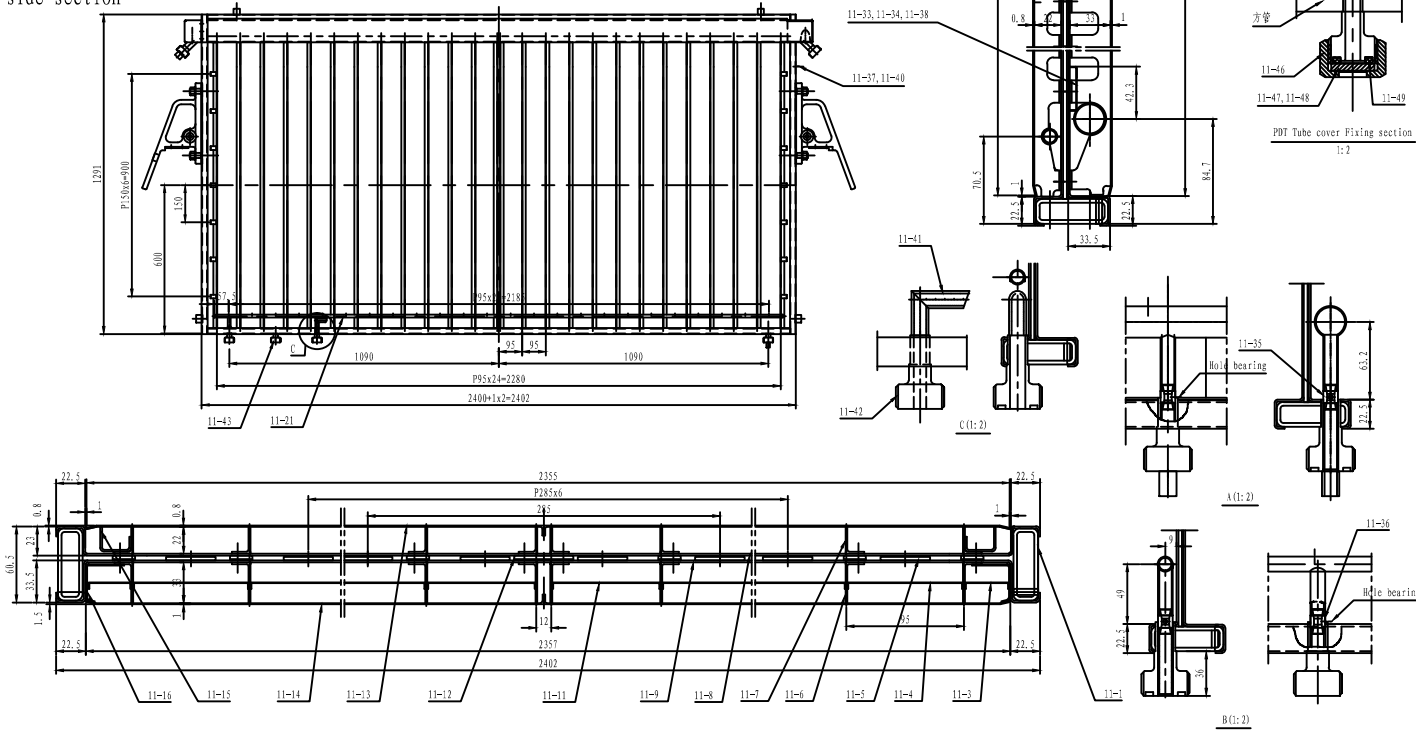


Anode side section



Cathode side section



ITEM NO	QTY	DESCRIPTION AND SPECIFICATION	UNIT	UNIT WT	TOTAL WT	REMARKS	
11-57	1	This DWG	Nickle belt	4	N6	0.08x4B	
11-56	1	This DWG	Cathode net	1	N6 coating	2480*51*1240*1B	
11-55	1	This DWG	Matross	1	N6	4660*51*1140*1B	
11-51	1	NB-4-44	Cathode outlet electrode	1	N6	0.03 0.03	
11-50	1	NB-4-43	Cathode inlet electrode	1	N6	0.01 0.014	
11-45	2	NB-4-38	Rubber hat	2	EPDM	0.008 0.014	
11-44	4	NB-4-37	Protecting Cover	4	EPDM	0.075 0.15	
11-40	8	GB/T 12618	Rivet 3.2x9-06	8	AL		
11-39	2	NB-4-35	Rubber hat	2	NR	0.008 0.016	
11-38	2	NB-4-34	Plate	2	TAI	0.005 0.01	
11-37	4	NB-4-33	Number slip	4	PVC		
11-36	1	NB-4-32	Tube	1	310S	0.025 0.025	
11-35	1	NB-4-31	Tube	1	TAI	0.01 0.015	
11-34	2	NB-4-30	Plate	2	TAI	0.01 0.02	
11-33	22	NB-4-29	Plate	22	TAI	0.01 0.22	
11-32	1	NB-4-28	Movable side bracket	1	Syntam	2.5 2.5	
11-31	1	NB-4-27	Cathode separate box	1	Syntam	6.68 6.68	
11-30	1	NB-4-26	Anode separate box	1	Syntam	5.37 5.37	
11-29	1	NB-4-25	Export electrode	1	TAI+	0.01 0.017	
11-28	1	NB-4-24	Anode export tube	1	TA2	0.175 0.175	
11-27	1	NB-4-23	Anode export box	1	TAI	0.175 0.175	
11-26	1	NB-4-22	Fix side bracket	1	Syntam	2.5 2.5	
11-25	4	GB/T 97.1	Washer 20	4	304	0.01 0.068	
11-24	4	GB/T 6170	Nut M20	4	304	0.062 0.348	
11-23	1	NB-4-21	Cathode export tube	1	0Cr25Ni20	0.31 0.3	
11-22	1	NB-4-20	Cathode export box	1	310S	0.34 0.34	
11-21	1	NB-4-19	Cathode dispersing tube	1	0Cr25Ni20	0.63 0.63	
11-20	1	NB-4-18	Inlet cathode nozzle	1	0Cr25Ni20	0.25 0.25	
11-19	1	NB-4-17	Anode dispersing tube	1	TAI	0.8 0.8	
11-18	1	NB-4-16	Inlet anode nozzle	1	TA2	0.14 0.14	
11-17	1	NB-4-15	Inlet anode electrode	1	TAI coating	0.007 0.007	
11-16	14	NB-4-14	Anode Support	14	TAI	0.01 0.14	
11-15	14	NB-4-13	Cathode Support	14	N6	0.1 1.4	
11-14	8	NB-4-12	Anode	1	TAI+Coating	8 8	
11-13	1	NB-4-11	Bottom Plate	1	NB201	12.5 12.5	
11-12	25	NB-4-10	Composite Plate	25	Q235-A/TAI	0.81 16.3	
11-11	2	NB-4-9	Plate	2	TAI	0.11 0.22	
11-9	1	NB-4-8	Anode Plate	1	TAI-TA9	15.42 15.4	
11-8	1	NB-4-7	Cathode Plate	1	N6	30 30.3	
11-7	26	NB-4-6	Cathode Rib	26	N6	0.323 8.4	
11-6	26	NB-4-5	Anode Rib	26	TAI	0.226 5.88	
11-5	20	NB-4-4	Supporting Net	20	anode/0.1	1 20	
11-4	22	NB-4-3	Plate	22	TAI	0.114 2.55	
11-3	2	NB-4-2	Plate	2	TAI	0.04 0.08	
11-1	1	NB-4-1	Frame	1	Syntam	35.45 35.45	
ITEM NO	QTY	DESCRIPTION AND SPECIFICATION	UNIT	UNIT WT	TOTAL WT	REMARKS	
CELL	NAME	DATE	Cell Frame			PART NO.	11
CELL						QTY	1
CELL						EACH WT	189
CELL			BLUESTAR (BEIJING) CHEMICAL			SCALE	1:10
CELL			MACHINERY CO., Ltd			DWG. NO.	NBZ-11
CELL			PROJECT			ISSUE NO	NBZ-0

