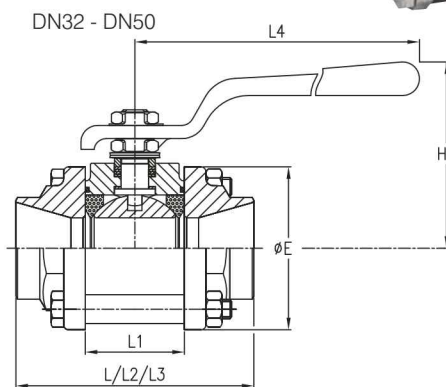
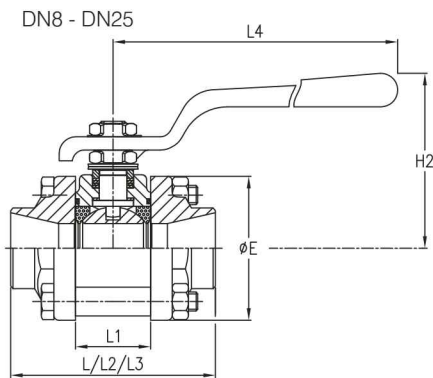
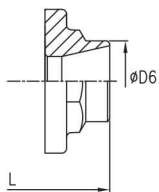


Series R

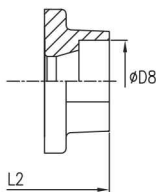
3 Piece ball valves with integrated handle DN8 - DN50
Butt weld, threaded, socket weld and flanged version



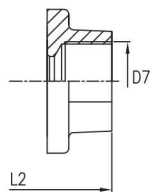
Available end connection options:



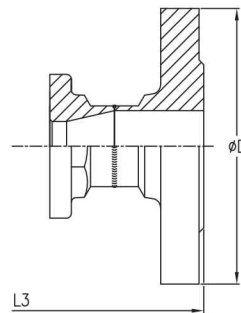
Butt weld: CBS



Socket weld: CBSW



Threaded: CBG



Flanged: CBF
(Cast versions available on request)

Design features

- Swing out body for easy maintenance
- Flexible installation features due to modular design
- Rugged design
- Reduced and full bore options available
- Stainless and carbon steel trim
- Forged end connections
- Cast and forged body materials
- Wide variety of seat material options available

Detailed technical information

- Threaded ends: (CBG), CBG according ISO 288-1, CBG conical according ISO 7 and NPT according ANSI B 1.20
- Socked weld (CBSW): Female socket weld ANSI B16.11
- Butt weld (CBS): ISO, DIN, ASME, OD, extended OD
- Flanged (CBF): Cast and forged design EN 1092-1, EN 1759-1. Standard Face-to-Face according EN 558 Series 1
- Design codes: DIN 3840, EN 13445
- DN8 - DN50: Forged bodies (forged up to DN100 on request). Larger sizes in cast body material.
- Special end connections are available on request
- Pressure rating: PN10 - PN100

Dimensions in mm

DN	L	L1	L2	L3	L4	H2	ØE	ØD	ØD6	D7	ØD8	Ball bore	Weight in Kg			
													CBS	CBSW	CBF	
series 1																
8	65	20.4	65	-	140	53	45	-	13.5	1/4"	14.2	11.1	0.5	0.5	-	
10	65	20.4	65	130	140	53	45	90	17.2	3/8"	17.6	11.1	0.5	0.5	2.2	
15	65	20.4	65	130	140	53	45	95	21.3	1/2"	21.8	11.1	0.5	0.5	2.2	
20	72.5	24.5	72.5	150	140	56	52	105	26.9	3/4"	27.4	14.2	0.8	0.9	3.1	
25	85.4	31.4	85.4	160	180	73	60	115	33.7	1"	34.2	20.6	1.3	1.4	3.9	
32	99.3	41.3	99.3	180	180	78	68	140	42.4	1 1/4"	43	25.4	1.9	1.9	6.1	
40	110.4	48.4	110.4	200	200	90	76	150	48.3	1 1/2"	49	31.7	2.8	2.8	7.4	
50	126.3	56.3	126.3	230	200	95	88	165	60.3	2"	61.1	38	3.9	4.1	10	

Notes

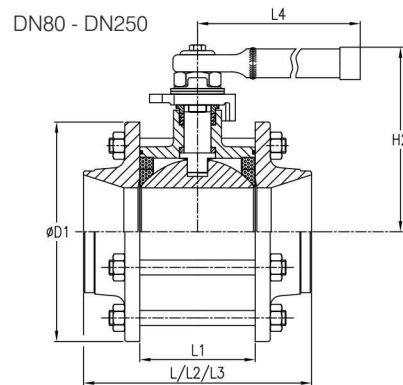
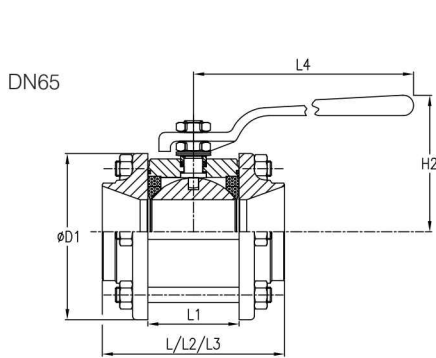
- All dimensions are related to reduced bore valves For full bore valves please apply the dimensions of the next diameter (except L3, ØD, ØD6, D7 and ØD8 which is identical in both instances)

Series R

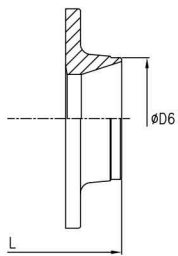
3 Piece ball valves with integrated handle DN65 - DN250

Butt weld, threaded, socket weld and flanged version

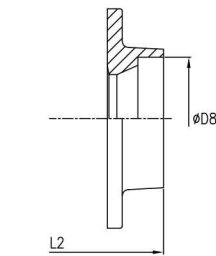
R 66 CBS DN100



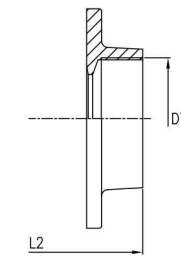
Available end connection options:



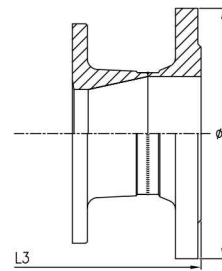
Butt weld: CBS



Socket weld: CBSW



Threaded: CBG



Flanged: CBF
(Cast versions available on request)

Approvals and certificates

- TA-Luft according VDI 2440
- CE marking: Module H, category III
- Fire tested according BS 6755
- Lloyds register type approval
- DIN.Tü.AGG, TÜV.AR type approval

CE - PED module H, up to category III
- TPED module H, up to category II

Dimensions in mm

DN	L	L1	L2	L3	L4	H2	øD	øD1	øD6	D7	øD8	Ball bore	Weight in Kg		
													CBS	CBSW	CBF
				series 1			(PN16)								
65	142.6	71.4	160	290	250	106	185	143	76.1	2 1/2"	77	50	6.7	6.8	16
80	169.5	88.9	180	310	480	156.5	200	165	88.9	3"	90	62	13	13	26
100	214	108.5	214	350	480	171.5	220	206	114.3	4"	115.5	82.4	23	23	34
125	277	134.6	-	400	480	185.5	250	234	139.7	-	-	100	37	-	47
150	307	134.6	-	480	480	185.5	285	234	168.3	-	-	100	40	-	56
200	409	189.1	-	600	720	262	340	345	219.1	-	-	150	85	-	134
250	460	248	-	730	800	310	405	428	273	-	-	200	150	-	200

Notes

- All dimensions are related to reduced bore valves. For full bore valves please apply the dimensions of the next diameter (except L3, øD, øD6, D7 and øD8 which is identical in both instances)